

# Easy Stock

## BARCODE STOCK CONTROL SYSTEM

### Overview

Easy Stock enables automated stock control and product tracking using a barcode system for Windows XP/2000/NT/98 based on a Microsoft Access database engine. (This can be upgraded to Sybase where millions of transactions are going through). It records transactions and integrates data from a Portable Data Terminal. (PDT). The package is modular and comprises four elements:

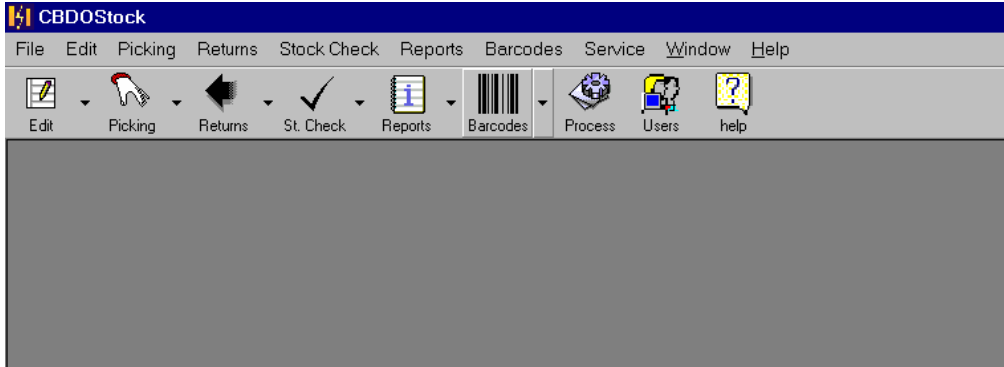
Stock Taking, Receipts & Despatches, Picking, Returns

The modules include programs for the Portable Data Terminal which is used to collect all the data and then transmit it to the PC software which manipulates the data and updates the database. The PC software includes the production of barcode labels where these are not already on the product

The following pages describe the functionality of each of the modules in more detail

## Window Interface

The Main screen is a typical Windows interface with drop down boxes from each item on the toolbar to select the options

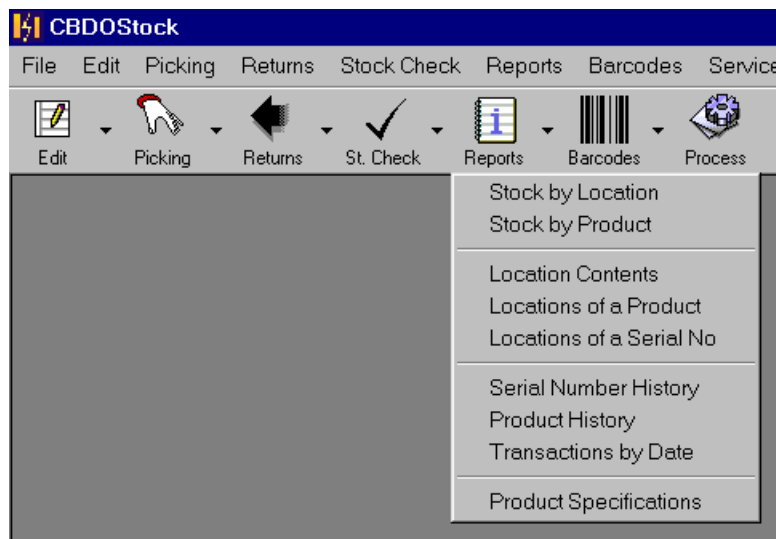


The portable data terminal ('PDT') is small and light and easily carried in the pocket and connected with a docking station to your PC. The processing of collected data is done via the Process icon above.



## Multiple Locations with Traceable Contents

The software keeps running totals by stock item so that stock can be held in either multiple dynamic or multiple static stock locations. (Many products in one location and many locations for a given product). The reports show several views of the stock situation There are detailed views of products and locations with histories of serial numbers or transactions by date to identify problems that have arisen. Histories of individual serial numbers or pallets are kept to provide full traceability



## Comprehensive Reports

Here is an example of the Stock by Product report which shows all the locations of each stock item listed in alphabetical order of Stock Code. Where you have serial number stock or Palletised stock the Serial numbers and Pallet Numbers are shown individually and the total amount shown as well.

**Stock by Product**  
02/05/02

Product	Serial	Location	Qty	Usercode
<b>CT1001(Connectors)</b>				
None		A-R1-L1	12.00	SB01
None		Goods In Bay	10.00	SB01
			<b>22.00</b>	
<b>FT2001SS(Floor Tiles)</b>				
None		A-R2-L1	4.00	SB01
None		A-R1-L1	23.00	SB01
None		Returns Area	2.00	SB01
None		Despatch	5.00	SB01
			<b>34.00</b>	

Here is another view of the same stock items but sorted by Location from which you can see that there is apparently product in the Goods in bay that needs putting away and two items in bin A1-R1-L1 which may or may not be correct. ('SB01' was the person responsible for the last transaction)

**Stock by Location**  
02/05/02

Location	Product	Serial	Qty	User	Notes
Goods In Bay	CT1001	None	10	SB01	
Despatch	FT2001SS	None	5	SB01	
Returns Area	FT2001SS	None	2	SB01	
A-R1-L1	FT2001SS	None	23	SB01	
A-R1-L1	CT1001	None	12	SB01	

## Minimum Stockholding Warnings

The screen below shows you the quantity in stock of each of your stock items and highlights in red any stock that has fallen below the minimum stockholding required.

Stock Code	Product	Stock Type	Category	Units in Stock	Container	Min Order Level
CT1001	Connectors	Commodity	A Slow Mover	22	Bag of 100	5
FT2001SS	Floor Tiles	Commodity	B Standard	34	Carton of 20	10
FT2012SL	Floor Tiles	Palletised	A Slow Mover	0	Pallet/10 Ctns	1
TV3004	Sony TV	Serialised	C Fast Mover	0	Box	10

## Drill Down Detailed Views with a single Click

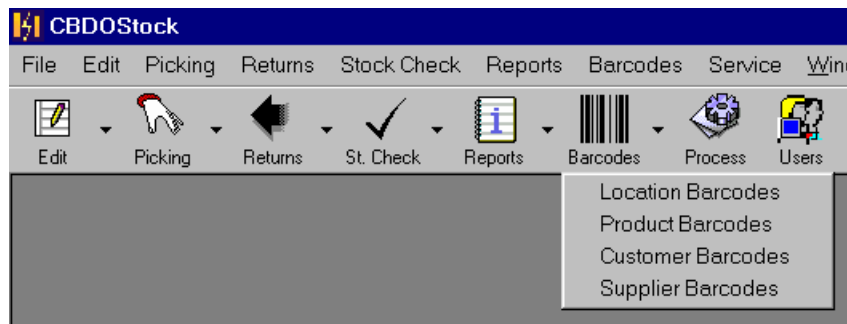
You will normally recognize many of your own stock codes but to view the full details of a given item, just double click on it to get the following screen

StockCode:	FT2001SS
Product:	Floor Tiles
Stock Type:	Commodity
Category:	B Standard
Units in Stock:	34
Container:	Carton of 20
Minimum Order Level:	10
Model:	Mascot
Style:	Self seal
Weight:	10
Size:	300x300mm

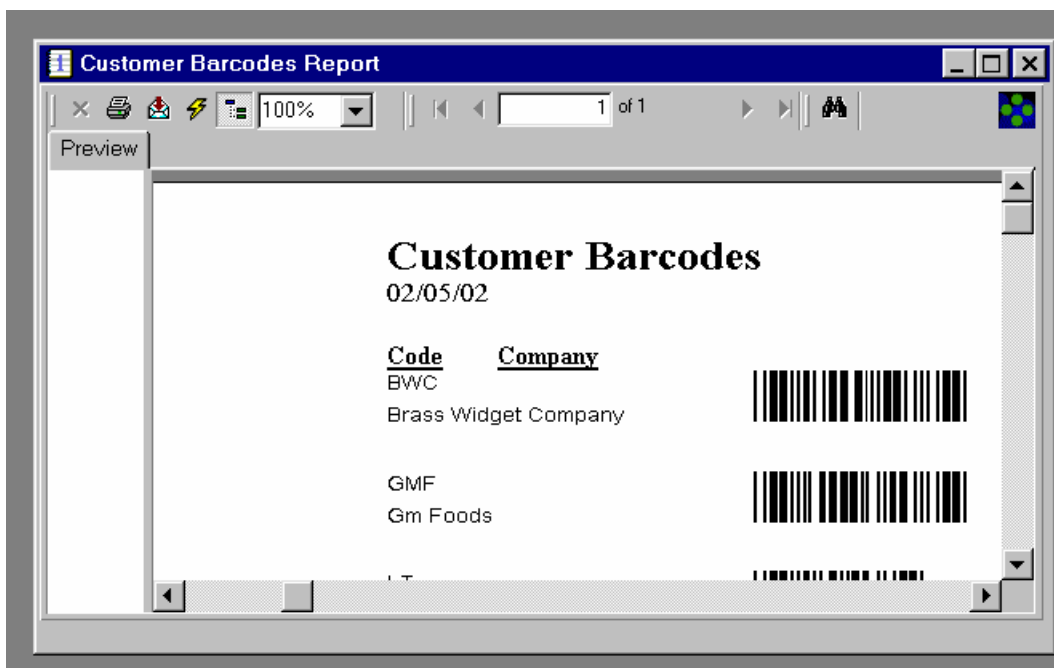
## Receipts and Despatches

This automates the logging of goods in and out and provides records of running stock totals and locations. The goods are logged in as "Received" by the PDT when they are off loaded at the goods in bay or transit area. They can then be put away in the stock locations later after checking and the barcode is then scanned again together with the putaway location. This is all done on the PDT with no paper transactions.

If there is no barcode on the product you can either print one off on a thermal transfer printer or print sheets of barcodes via the office laser/inkjet printer which serve to provide you with universal standby barcodes for Products, Locations, Suppliers and Customers

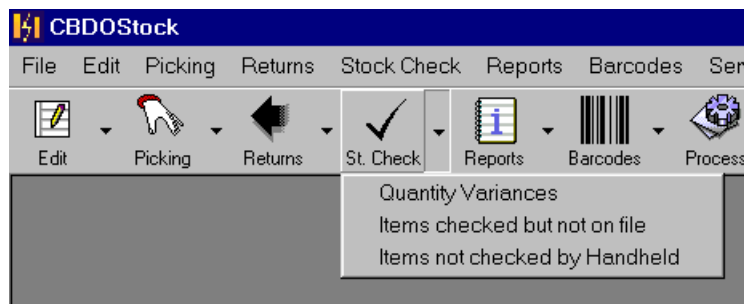


Here is an example showing the Customer barcodes. You could use these to scan a destination code into the PDT



## Stock Taking

Stock can be counted very quickly with no paperwork by scanning product codes at their stock locations with the PDT. After upload to the PC the stock take module produces reports which identify records of items to be rechecked or adjusted to the actual count. There is no need to count all stock at the same time and this can be done piecemeal.



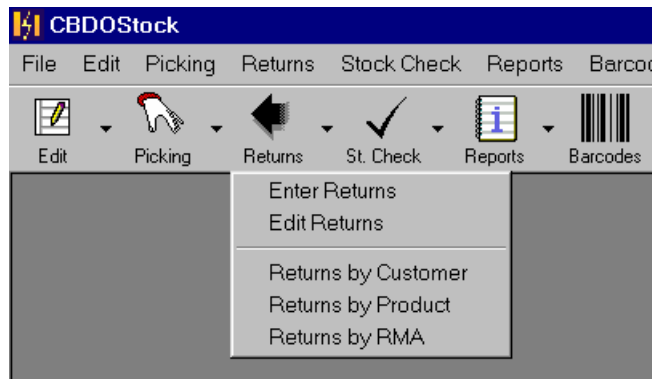
The variance reports on the stock identify numerical differences immediately so that recounts and double checking become very easy and quick. There are also reports on missing items which show stock that is shown as existing on the PC but apparently not yet recorded on the Hand Held, and the reverse where stock has been recorded on the hand held but which does not show up on the PC. Adjustments can then be made on the spot and the reconciliation becomes an easy task.

## Product tracking

The software and PDT recognize three types of stock: Stock which is a commodity product such as cement or food, pallets of commodity product with a serial number on the pallet to track the date received and lastly serial numbered products such as machines or instruments. The serial numbers or Pallet numbers are tracked from the time they arrive to the time they leave with details of location and dates. You can therefore determine the age of stock from the reports and operate a 'First In First Out' or other selection method to suit your operation.

## Returns Module

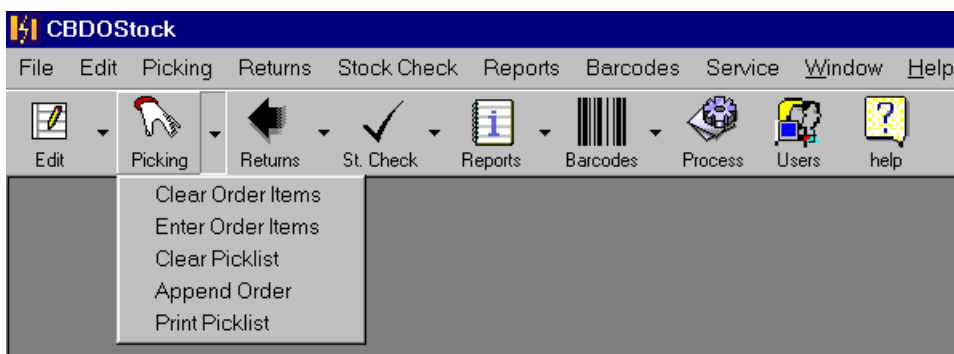
The returns module is designed to separate out faulty stock either returned to you by your customer or returned by you to your supplier



It enables you to edit the status of a return and the reports show you what has happened to it and whether it is still under repair in the quarantine bay, out in the warehouse awaiting despatch, back at the customer, back at the supplier etc.

## Picking and Despatch module

A picking list of items and quantities is entered and the program generates a picklist showing where the items are to be found. This is downloaded to the PDT sorted in order of location with date information where appropriate. On picking the items the PDT scans the product barcode and scans or enters the shelf location. This is then uploaded to the host when the the stock is adjusted . A record is kept of any "Not found" or partially picked items so that when the data is transmitted to the PC , a back order file is created.



## Stock Analysis

You can also classify your stock by categories to assess slow movers or high value situations. You define your own classifications in the screen below and assign a category when entering the product data. This can be changed of course if the product situation itself changes. The descriptions below are editable to your preferred categorisation

