

# Clear Systems Limited

181 Cubbington Road, Royal Leamington Spa,  
Warwickshire, CV32 7AU.

0845 643 2440 :: support@clearsystems.co.uk

## EasyTime Technical Bulletin.

### Reader stops recording card swipes after system date set into future and corrected

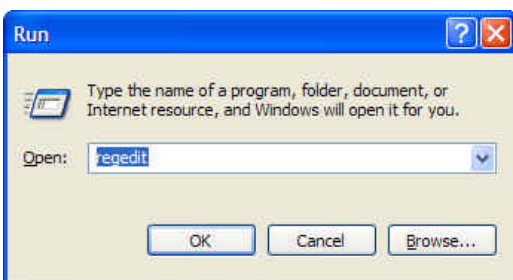
Date	inits	vsn	revision
27/05/05	NickR	1.0	

If the system date has been accidentally set forward into the future and EasyTime has run while the setting is in force then, when the date is set back to the correct date, EasyTime will not record card swipes even though the reader connects correctly.

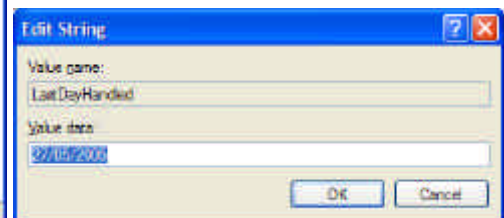
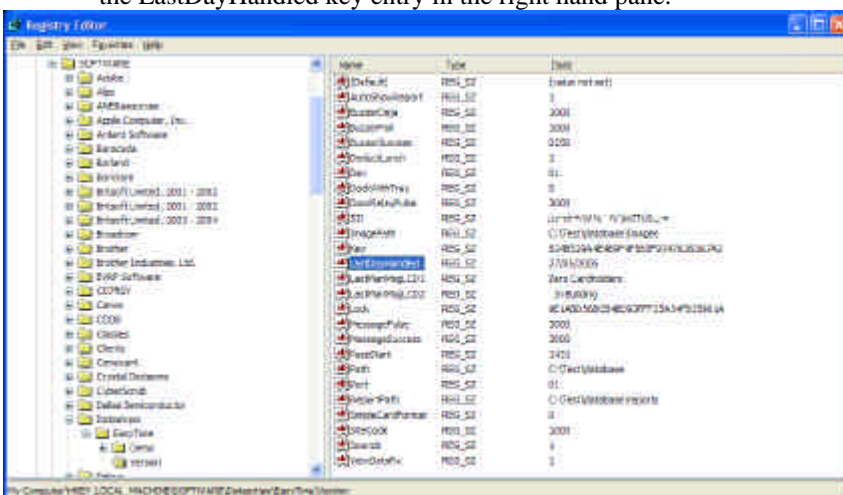
The cause of this is that EasyTime sets a value in the Windows Registry for the “LastDayHandled” and it will not function correctly until that date is reached.

To correct this do the following:

1. Shut Down EasyTime.
2. After making all the usual backup and security precautions run the Registry Editor, regedit, from Start, Run.



3. Navigate to My Computer\HKEY\_LOCAL\_MACHINE\SOFTWARE\Datastripe\EasyTime\Version and double click on the LastDayHandled key entry in the right hand pane.



4. The Value data should show the incorrect date value highlighted – erase it by hitting the backspace key, click OK and then close the Registry Editor.
5. Now, **before starting EasyTime**, set the correct Date and Time.
6. Now start EasyTime and do some test swipes – you may find it helpful to have the View Data Rx box ticked, then you should see any card swipe data – for loyalty/credit cards etc.